



- 1)
- a) 12
- b) 24
- c) 7
- d) 365
- e) 366
- 2) **June and September**
- 3) **2028**

4)

Date	One week later
20 th March	27th March
23 rd February	1st March
30 th April	7th May



- 1) **September is the odd one out. It is the only month in the list that has 30 days. The other months have 31 days.**
- 2) **Abi's statement is sometimes true. A non-leap year has 365 days which is odd and a leap year has 366 days which is even.**
Elias's statement is always true. Each month has 28, 29, 30 or 31 days so each month has at least 28 days.
- 3) **Children should disagree with Hari as exactly 4 weeks is 28 days and we know that there are months with more than 28 days.**
Children may reference that the only month which has exactly 4 weeks is February when it is a non-leap year.



- 1) **January, February (if it is not a leap year) and March or December, January and February (if it is not a leap year).**
- 2) **December**
- 3) **There are a variety of questions. For example:**
How many days are there in 4 weeks?
How many days are there in February when it is not a leap year?
How many days are there in the shortest month?

Years, Months and Days



1) Use these numbers to complete the sentences.

12

365

366

7

24

- a) There are _____ months in a year.
- b) There are _____ months in two years.
- c) There are _____ days in a week.
- d) There are _____ days in a non-leap year.
- e) There are _____ days in a leap year.

2) Tick the pair of months which have 60 days in total.

January and April

June and September

July and November

August and December

3) 2024 will be a leap year. When is the next leap year after 2024?

4) Look at these dates from 2024. Complete the table using a calendar if needed.

Date	One week later
20 th March	
23 rd February	
30 th April	

Hint: 2024 is a leap year.

Years, Months and Days



1) Which month is the odd one out? Explain your choice.

December

July

October

September

August

January

2) Two friends are talking about days, months and years.



A year has an odd number of days.

Abi

Every month has at least 28 days.

Elias



Are their statements always true, sometimes true or never true?

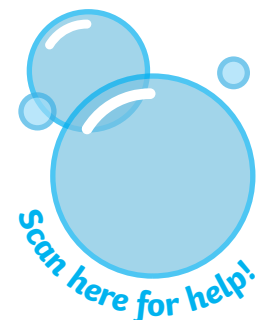
Explain your answers.

3) Do you agree with Hari's statement? Explain your reasoning.



There are exactly 4 weeks in every month.

Hari



Years, Months and Days



1) The total of these three consecutive months is 92 days.

March
31 days

April
30 days

May
31 days

Find three consecutive months which have a total of 90 days in a non-leap year.

2) Use the clues to work out which month the calendar shows.

The total number of days in this month and the month after it is 62 days.

It is in winter.

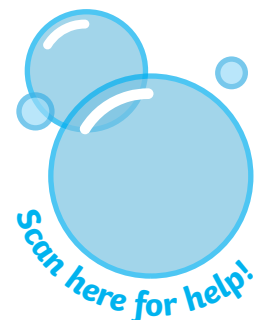
It is a leap year.

Mon.	Tues.	Wed.	Thurs.	Fri.	Sat.	Sun.
	1	2	3	4	5	6
7	8	9	10	11	12	13
14	15	16	17	18	19	20
21	22	23	24	25	26	27
28	29	30	31			

The calendar shows the month of _____.

3) Write as many questions as you can about days, weeks, months and years where the answer is 28.

28

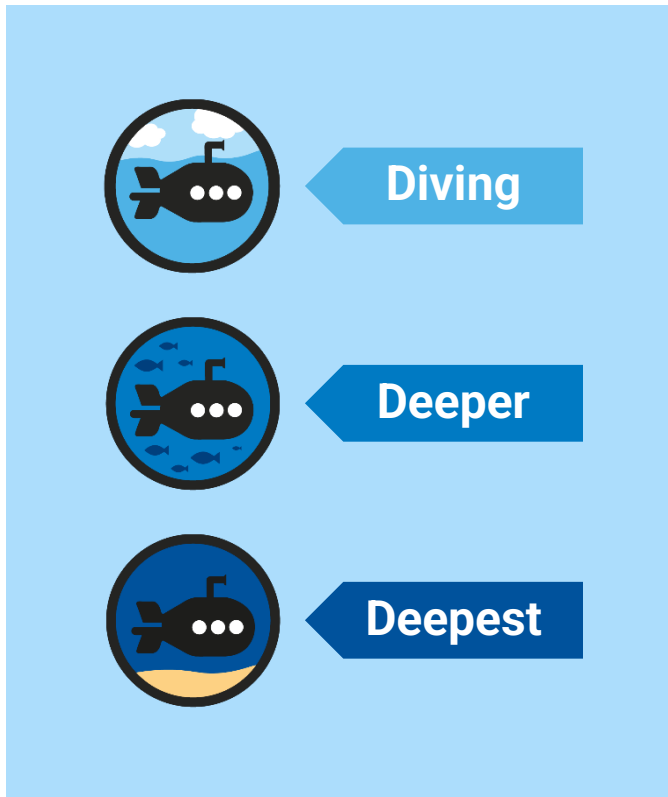




Years, Months and Days

Diving into Mastery Guidance for Educators

Each activity sheet is split into three sections, diving, deeper and deepest, which are represented by the following icons:



These carefully designed activities take your children through a learning journey, initially ensuring they are fluent with the key concept being taught; then applying this to a range of reasoning and problem-solving activities.

These sheets might not necessarily be used in a linear way. Some children might begin at the 'Deeper' section and in fact, others may 'dive straight in' to the 'Deepest' section if they have already mastered the skill and are applying this to show their depth of understanding.

National Curriculum Aim

- Know the number of seconds in a minute and the number of days in each month, year and leap year



Use these numbers to complete the sentences.

4**30****6****36****31**

There are months in half of a year.

There are days in January.

There are months in three years.

There are days in September.

Leap years happen every years.



Which pair of months have 58 days in total in a non-leap year?

January and February

February and March

February and April

February and December

February = 28 days
April = 30 days
 $28 \text{ days} + 30 \text{ days} = 58 \text{ days}$



Which of these months has the most days?
Explain your choice.

June

November

April

May

September

May has the most days as it has 31 days. All the others have 30 days.



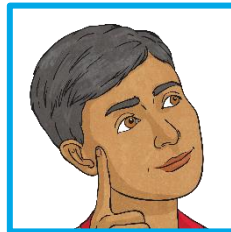
Three friends are talking about days, months and years.
Are their statements always true, sometimes true or never true?

Two consecutive months add up to 61.



Abi

A leap year happens every 4 years.



Hari

One week later than 27th February is 7th March.



Elias

This is sometimes true. March and April have 61 days in total but July and August have 62 days.

This is always true. There is a leap year every 4 years.

This is never true. In a non-leap year, it would be 6th March and in a leap year, it would be 5th March.

Years, Months and Days

Deepest



Use the clues to work out which month the calendar shows.

Mon.	Tues.	Wed.	Thurs.	Fri.	Sat.	Sun.
	1	2	3	4	5	6
7	8	9	10	11	12	13
14	15	16	17	18	19	20
21	22	23	24	25	26	27
28	29	30	31			

May

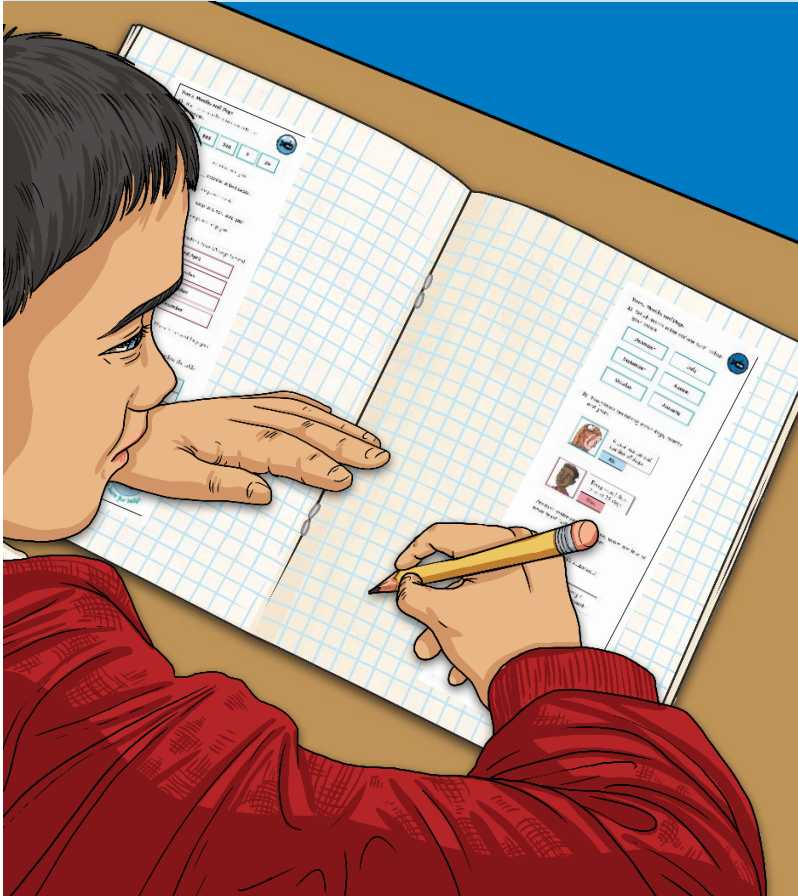
It is not a leap year.

It is in spring.

The total number of days in this month and the months before and after it is 91 days.

Years, Months and Days

Dive in by completing your own activity!



Years, Months and Days

1) Use these numbers to complete the sentences.

12 365 366 7 24

a) There are _____ months in a year.
b) There are _____ months in two years.
c) There are _____ days in a week.
d) There are _____ days in a non-leap year.
e) There are _____ days in a leap year.

2) Tick the pair of months which have 60 days in total.

January and April

June and September

July and November

August and December

3) 2024 will be a leap year. When is the next leap year after 2024?

4) Look at these dates from 2024. Complete the table using a calendar if needed.

Date	One week later
20 th March	
23 rd February	
30 th April	

Hint: 2024 is a leap year.

twinkl twinkl twinkl visit twinkl.com

Years, Months and Days



- 1) Use these numbers to complete the sentences.

12	365	366	7	24
----	-----	-----	---	----

- a) There are _____ months in a year.
- b) There are _____ months in two years.
- c) There are _____ days in a week.
- d) There are _____ days in a non-leap year.
- e) There are _____ days in a leap year.
- 2) Tick the pair of months which have 60 days in total.

January and April
June and September
July and November
August and December

- 3) 2024 will be a leap year. When is the next leap year after 2024?
- 4) Look at these dates from 2024. Complete the table using a calendar if needed.

Date	One week later
20 th March	
23 rd February	
30 th April	

Hint: 2024 is a leap year.

Years, Months and Days



- 1) Use these numbers to complete the sentences.

12	365	366	7	24
----	-----	-----	---	----

- a) There are _____ months in a year.
- b) There are _____ months in two years.
- c) There are _____ days in a week.
- d) There are _____ days in a non-leap year.
- e) There are _____ days in a leap year.
- 2) Tick the pair of months which have 60 days in total.

January and April
June and September
July and November
August and December

- 3) 2024 will be a leap year. When is the next leap year after 2024?
- 4) Look at these dates from 2024. Complete the table using a calendar if needed.

Date	One week later
20 th March	
23 rd February	
30 th April	

Hint: 2024 is a leap year.

Years, Months and Days



- 1) Which month is the odd one out? Explain your choice.

December

July

September

August

October

January

- 2) Two friends are talking about days, months and years.



A year has an odd number of days.

Abi



Every month has at least 28 days.

Elias

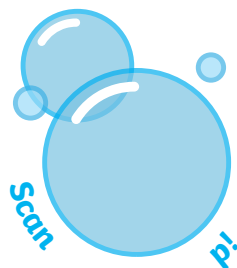
Are their statements always true, sometimes true or never true? Explain your answers.

- 3) Do you agree with Hari's statement? Explain your reasoning.



There are exactly 4 weeks in every month.

Hari



Years, Months and Days



- 1) Which month is the odd one out? Explain your choice.

December

July

September

August

October

January

- 2) Two friends are talking about days, months and years.



A year has an odd number of days.

Abi



Every month has at least 28 days.

Elias

Are their statements always true, sometimes true or never true? Explain your answers.

- 3) Do you agree with Hari's statement? Explain your reasoning.



There are exactly 4 weeks in every month.

Hari



Years, Months and Days



- 1) The total of these three consecutive months is 92 days.

March 31 days	April 30 days	May 31 days
-------------------------	-------------------------	-----------------------

Find three consecutive months which have a total of 90 days in a non-leap year.

- 2) Use the clues to work out which month the calendar shows.

The total number of days in this month and the month after it is 62 days.

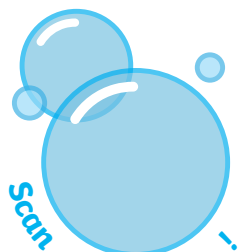
It is in winter.

It is a leap year.

Mon.	Tues.	Wed.	Thurs.	Fri.	Sat.	Sun.
	1	2	3	4	5	6
7	8	9	10	11	12	13
14	15	16	17	18	19	20
21	22	23	24	25	26	27
28	29	30	31			

- 3) Write as many questions as you can about days, weeks, months and years where the answer is 28.

28



Years, Months and Days



- 1) The total of these three consecutive months is 92 days.

March 31 days	April 30 days	May 31 days
-------------------------	-------------------------	-----------------------

Find three consecutive months which have a total of 90 days in a non-leap year.

- 2) Use the clues to work out which month the calendar shows.

The total number of days in this month and the month after it is 62 days.

It is in winter.

It is a leap year.

Mon.	Tues.	Wed.	Thurs.	Fri.	Sat.	Sun.
	1	2	3	4	5	6
7	8	9	10	11	12	13
14	15	16	17	18	19	20
21	22	23	24	25	26	27
28	29	30	31			

- 3) Write as many questions as you can about days, weeks, months and years where the answer is 28.

28

